

# StreetSure™ - Bristol City

- Pocket PC application for Highway Inspection and Maintenance (patent pending)
  - **Classify highway/pavement surface damage**
  - **Categorise the maintenance requirement with a combined safety checklist**
  - **Accurately locate and record into a simple electronic database at the roadside**
- The system comprises of a field unit, PocketPC (HP iPAQ 2210 or equivalent) with the StreetSure™ application software
  - **Pocket PC with integrated GPS**
  - **One compact, robust & inexpensive handheld unit**
  - **Application designed for ease of use, with buttons & pull down menu's**



# StreetSure™ - Bristol City

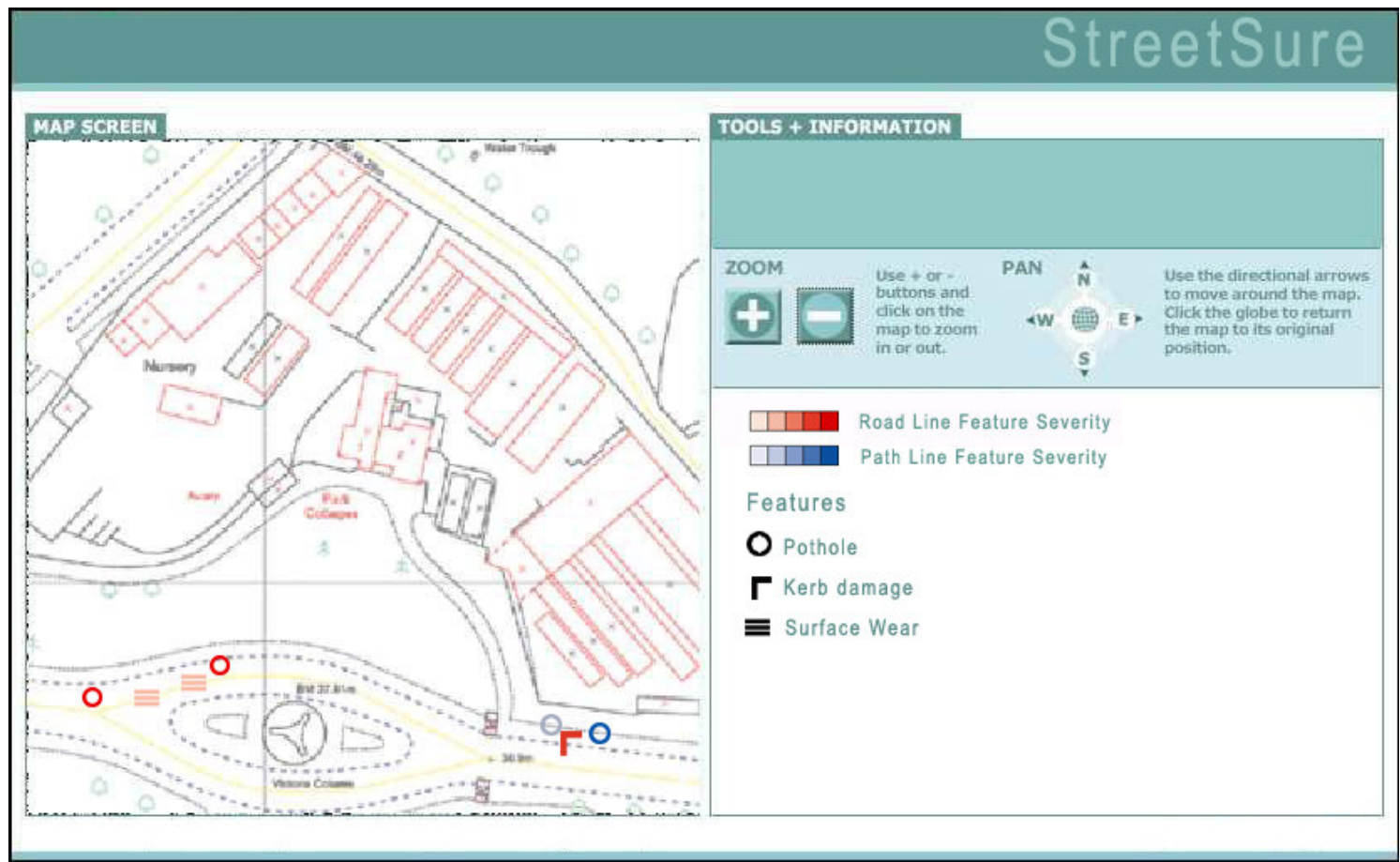
- The StreetSure™ system is designed for flexibility
- Adapted for many council uses where classification or action needs to be assessed and recorded together with an accurate location for the work groups
- The StreetSure™ field unit can also be used to help navigate - using a standard GPS mapping system, to the maintenance locations recorded in the database



# StreetSure™ - Bristol City

- All data collected on the hand held units is automatically collated and stored in the host system database.

The host application performs an analysis of the incoming information and provides detailed reports in list or map form of current data.





## StreetSure™ - Bristol City

- **StreetSure Reports allow specific areas to be analysed and provide structured work lists according to council requirements. For example reports can be generated which highlight only those road/path conditions that require urgent attention or ones that can be most efficiently carried out on a localised basis. Priority lists can also be produced for all current data**
- **Completed work details can be checked back into the system and is then cleared from the active lists**
- **Map Display - An alternative to the list views is the map display which provides a user-friendly icon-based representation of the road/path condition. It is also possible to drill down to a particular map location through the reporting lists**
- **Map Data - Vector or Raster map based, raster display would require access to 1:10,000 scale maps. Having spoken to OS map services department, Bristol council probably already have access through existing agreements to Landline vector data. If this is not the case suitable mapping data can be sourced and it would only be necessary to purchase a license for the tiles that cover the desired local area**