

Bitworks CAN Development Environment (CANDE)

- Windows based graphical user interface
- Supported by existing Bitworks dual channel CAN CA2/CA2-104 controller PC Cards
- Provides real time CAN bus monitoring with a choice of display and statistical formats
- Powerful message search and record capabilities
- Complete platform for the reception and transmission of CAN messages

The Bitworks CAN Development Environment (CANDE) provides a Windows 95/98/2k/NT & XP graphical user interface that is designed to support engineers in the design, rapid prototyping and testing of CAN bus systems. The CANDE is directly supported by the Bitworks CAN CA2 and CA2-104 PC controller cards. These adapter cards provide two independent CAN interfaces, fully compliant with CAN physical layer ISO 11898 Part 2.0B.

The CANDE provides a means of setting up the CAN hardware and configuring the interface for the purpose of transmitting or receiving CAN message objects without the requirement for the user to write dedicated software routines.

The CANDE also includes an integrated CAN bus Monitor providing full CAN bus monitoring in real time. CAN messages are time stamped and may be recorded to disk in the form of a log file. CAN messages /frames are displayed in text and/or graphical form. The bus monitor supports message trace, filtering and masking together with the display of realtime bus analysis and statistical parameters.

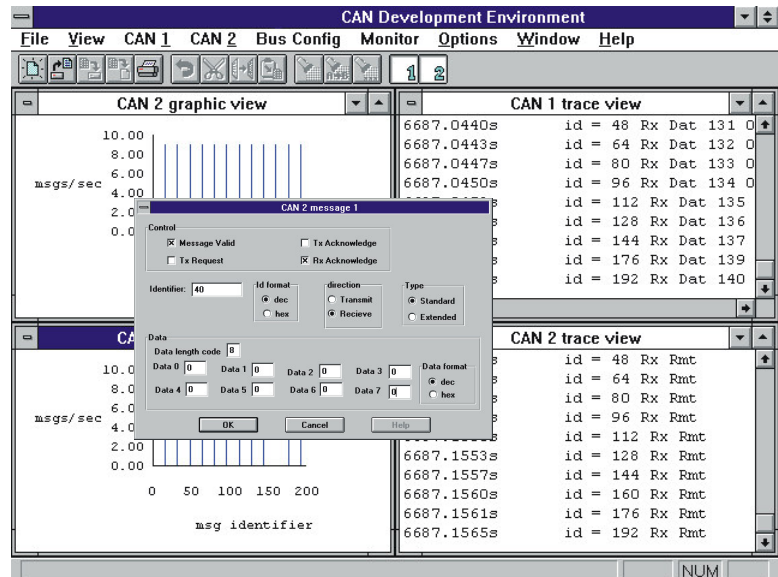
CAN Bus Application

Central CAN Controller function
 CAN Bus Monitor/Analyser
 CAN test message generator for electrical physical layer testing
 Interface/Bridge between two CAN systems
 Emulation of a single CAN Node
 Emulation of a CAN system for testing a single Node

CAN Software:

Operates under Windows 95/98/2k/NT & XP
 5MB of hard disk space required
 4MB of system ram required
 Requires 1 spare interrupt request IRQ 3,4,5,7,9
 Requires 4 I/O addresses 300h to 37Ch

Pricing GBP 90.00 EUR 130.00



CAN Controller Software (Win95/98/2k/NT & XP)

CAN Development Environment (CANDE)
 CAN Message Script Language, Message creation, transmission and reception, data formatting & conditionals.
 CAN Hardware Configuration.
 Host for CANMON.

CAN MONITOR (CANMON) (Win95/98/2k/NT & XP)

Full CAN bus Monitoring, time stamped data logging of CAN Data, Remote & Error Frames.
 Graphical CAN message display. Message Trace facilities, filtering and masking.
 Message Analysis and Statistics.

